



BARRIER INSTALLATION GUIDE

Produced by B. S Developments Manufacturers of Easi Set JJ HOOK Barriers

THIS IS A GUIDE TO ASSIST ENGINEERS AND CONTRACTORS TO
SELECT THE MOST APPROPRIATE OPTION TO PROTECT THEIR WORKSITE.

THIS IS TO BE USED AS A GUIDE ONLY .

ENSURE YOU REFER TO THE REQUIREMENTS IN COPTTM AND
ENSURE YOU MEET THE REQUIREMENTS OF THE ROAD CONTROLLING
AUTHORITY
IF IN DOUBT

CONTACTJOHN GLEN 0273666099.
e mail traffnz@orcon.co.nz



CODE OF PRACTICE FOR TEMPORARY TRAFFIC MANAGEMENT (COPTTM) REFERENCE.

www.nzta.govt.nz go to Manuals

SECTION B EQUIPMENT

SUB SECTION 7 BARRICADES

SUB SECTION 11 BARRIERS



Barrier compliance requires Barriers to be tested to NCHRP 350 TL 1,2 or 3.

TL1.....Up to 50 kph

TL2.....Up to 70 Kph

TL 3Up to 100kph.

NCHRP350 TESTS LEVELS

Product Item	Compliance	TL 1	TL 2	TL 3
B.S Developments JJ Hook Concrete Barrier		YES	YES	YES
Idaho barriers (pin Loop) multi manufacturers		YES	YES	YES
Barrier Guard (steel barrier) Armourflex		YES	YES	YES
Absorb 350 from CSP Crash end terminal		YES	YES	YES
(COMPLIANCE FULLY CONNECTED AND FILLED WITH WATER.				
Triton water filled from (Saferoads) as a CRASH TERMINAL		YES	YES	YES
(for compliance fully connected and filled with water)				
Triton water filled barriers as a barrier system		YES	YES	YES
(for compliance linked and fully filled with water)				
Armourflex (PLASTIC) water filled barriers		YES	NO	NO
(Compliance f requires them to be fully linked and ballasted with water)				
HIREPOOL , RSEA,HIREQUIP ETC.plastic waterfilled		NO	NO	NO
Units are only BARRICADES and are NOT crash rated				



Crash rated waterfilled barriers .

To be compliant they must be installed as per the crash test ..linked and filled with water.

Limited stocks available

SAFETY WARNING ALL UNITS MUST HOLD WATER TO COMPLY

ARMOURFLEX 50KPH BARRIER





WHAT IS A CRASH BARRIER AND WHAT IS NOT

BARRICADES.
PLASTIC WATER FILLED UNITS.
HIREPOOL
HIREQUIP
RSEA AND GENERAL HIRE CO'S



NCHRP 350 CRASH BARRIER
CONTACT B.S DEVELOPMENTS
FOR SUPPLIER DETAILS
FOR SALE
FOR HIRE





CAUTION WHEN USING PLASTIC WATER FILLED BARRIER SHAPED UNITS

- The water filled (w/f) BARRICADES that are presently in wide use in association with the construction industry DO NOT meet any CRASH test criteria.
- BE AWARE.....
- Note ...
- Check the individual barrier and there is an imprint that warns that the barrier should not be used as a crash barrier.
- The w/f BARRICADES that do not have a crash test rating are BARRICADES known as ...
- RSEA's.....Rhino and Arrow
- Hire Pool's ..w/f barriers
- Projexw/f barriers
- And all other hire Co barriers.
- SPECIAL NOTE.
- The above BARRICADES can be used as delineators providing they are offset by 1 m and marked by a line of 900mm cones.
- For the BARRICADES to be used in any other format an EED (Engineering Exception Decision) is required at time of TMP submission.



INCORRECT SELECTION OF SITE PROTECTION !!!

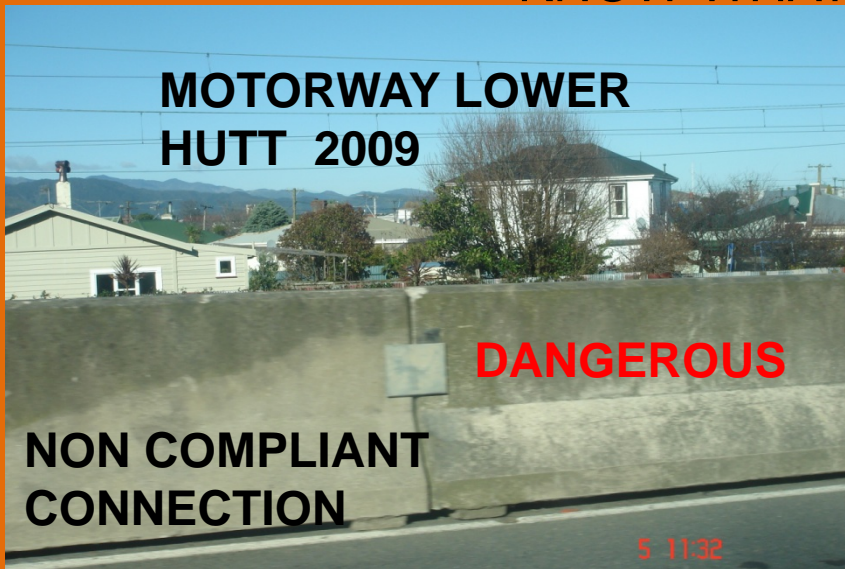
SITE WAS SHUT DOWN IMMEDIATELY !!!!
CONCRETE BARRIERS REPLACED THE PLASTIC BARRICADES
THE NEXT DAY.
EXTREMELY DANGEROUS SITUATION....
SITE INTRUSIONRESULT WOULD HAVE BEEN DEATHS





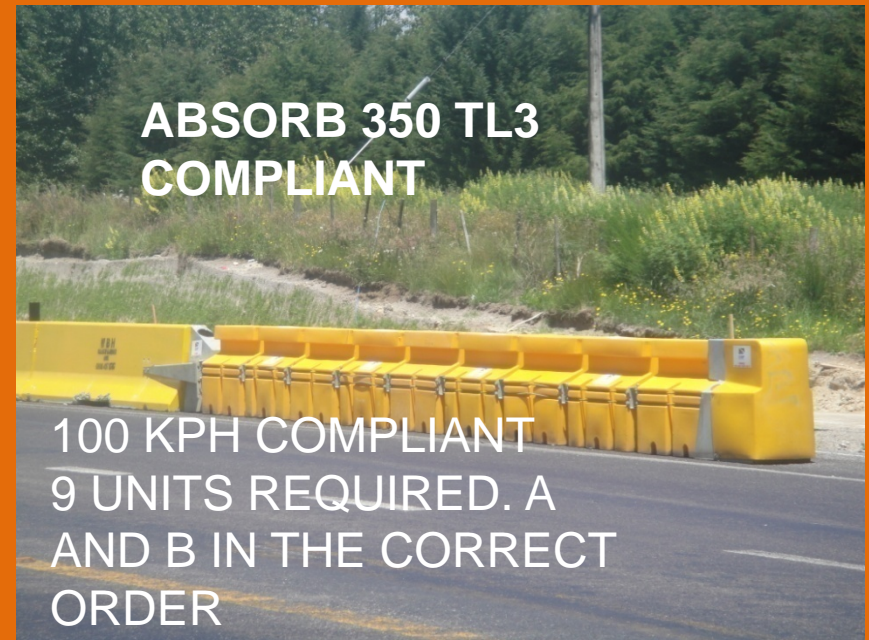
**NON COMPLIANT BARRIERS.
RE CYCLED MEDIUM BARRIERS
NON TESTED CONNECTION.
LEGAL ACTION IN THE EVENT OF AN ACCIDENT
IS THE RISK WORTH IT?**

KNOW WHAT YOU CAN USE



DIFFERENT WATER FILLED END TREATMENTS

TO BE COMPLIANT THEY ALL NEED TO BE INSTALLED TO THE MANUFACTURES SPECIFICATIONS . THEY ALL NEED TO BE FILLED WITH WATER AS WELL TO BE COMPLIANT.

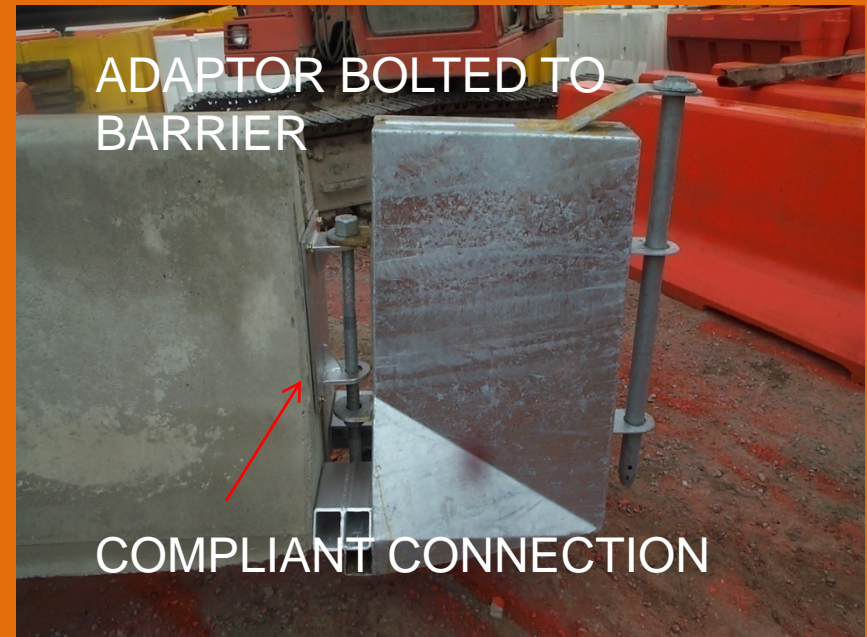


COMPLIANT AND DANGEROUS CONNECTIONS OF JJ BARRIERS TO THE TRITON CRASH END TERMINALS

DANGEROUS



COMPLIANT



NON COMPLIANT END TERMINAL ATTACHMENTS



COMPLIANT END TERMINAL CUSTOM TRANSITION TERMINAL





B.S DEVELOPMENTS JJ BARRIERS SH 29 KAIMAI TAURANGA

LEADING EDGE FLARE NO END
TERMINAL



TAPER AS PER COPTTM
NO END TERMINAL

B.S DEVELOPMENTS JJ BARRIERS
SH 1 SILVERDALE
NO END TERMINALS....SIDE ROAD
EED FOR EXEMPTION FOR END
TERMINAL ...SPEED RESTRICTION.



SIDE ROAD ACCESS
REQUIRED..EED EXEMPTION



SH 1 NORTHERN GATEWAY PUHOI TUNNEL CONSTRUCTION ROAD WIDENING





B. S DEVELOPMENTS JJ BARRIERS SITE PROTECTION OF DEEP EXCAVATIONS





B.S DEVELOPMENTS JJ BARRIERS NCHRP350 TL3

B.S DEVELOPMENTS JJ BARRIERS NCHRP350 TL3

BARRIERS SH 1 DOME VALLEY WARKWORTH

SH 29 KAMAI S' TAURANGA

COMPLIANT INSTALLATIONS





B.S DEVELOPMENTS

JJ BARRIER NCHRP 350

B.S DEVELOPMENTS

JJ BARRIER NCHRP350





SITE PROTECTION. SH 1 NORTHERN GATEWAY PUHOI TUNNELL



80KPH TSR



**3.6M JJ HOOKS
UNITS**

**80 KPH
SPEED
RESTRICTION**

BARRIER INSTALLATION METHODS

12 T DIGGER MIN FOR 3.6M
BARRIERS
20T DIGGER FOR 6 M BARRIERS

WALKER BARRIER HIRE
AUCKLAND
HIAB TO PLACE 3.6M AND 6M
UNITS





Lifting and placement methods...(min 2 person operation) for safety Chains...(using a hiab digger or crane)

The barriers can be lifted vertically by utilising the two swiftlift conncections found on the top of the barrier systems.

SPECIAL NOTE...CORRECT LIFTING REQUIREMENT.

The chains to lift the barriers when using chains and the swif lift connectors the chains should be @ 60 degrees....An angle less that 60 degrees will damage the swift lifts.

Spreader Bar.(using a hiab digger or crane)

Utilising the swift lift and chains with a spreader bar allows the lifting chains to be located directly above the lifting eyes ..(Optimum lift.)

Using chains allows alignment and shortening of one end to install on sloping ground.

Friction clamp.

KENCO or other frictions clamps can be utilised however caution when lifting painted barriers in the wet. A safety chain around the barrier may be required and attached to the lifter seperately

This system inhibits adjustment for installing on sloping ground.

Traffic Control Auckland Limited

B.S Developments N.Z Ltd

Office 60 East St Papakura

Postal P O Box 10

Drury, Auckland, New Zealand

Tel/Fax: (09) 2968069

Mobile : 027 3666099

Email : traffnz@orcon.co.nz

www.trafficcontrol.co.nz



EASI SET JJ HOOKS®

Traffic Control Auckland Limited

B.S Developments N.Z Ltd

Office 60 East St Papakura

Postal P O Box 10

Drury, Auckland, New Zealand

Tel/Fax: (09) 2968069

Mobile : 027 3666099

Email : traffnz@orcon.co.nz

www.trafficcontrol.co.nz



EASI SET JJ HOOKS®

Traffic Control Auckland Limited

B.S Developments N.Z Ltd

Office 60 East St Papakura

Postal P O Box 10

Drury, Auckland, New Zealand

Tel/Fax: (09) 2968069

Mobile : 027 3666099

Email : traffnz@orcon.co.nz

www.trafficcontrol.co.nz



EASI SET JJ HOOKS ®